

Minutes of a meeting of the Leicestershire Local Access Forum held at County Hall, Glenfield on Thursday, 28 January 2016.

PRESENT

Ms. V. Allen	Mr. A. Hillier-Fry
Ms. H. Brown	Mr. J. Howells
Mrs. R. Camamile CC	Mr. T. Kirby
Mr. R. Denney	Mr. J. Law
Mr. M. Gamble	Mr. S. Warren

1. Election of Chairman.

The Committee Officer invited nominations for the position of Chairman of the Leicestershire Local Access Forum for the period ending January 2017.

Mr Terry Kirby nominated himself for the position and was seconded by Mr Michael Gamble to be elected Chairman of the Forum. There were no further nominations.

AGREED:

That Mr Terry Kirby be elected Chairman of the Leicestershire Local Access Forum for the period ending January 2017.

MR. T. KIRBY IN THE CHAIR

2. Election of Vice-Chair.

The Chairman invited nominations for the position of Vice Chair for the period ending January 2017.

No nominations were received for the position of Vice Chair.

RESOLVED:

That the item be deferred to the next meeting of the Forum.

3. Welcome by Chairman and apologies received.

The Chairman welcomed those present and welcomed Mr Graham Cameron who would be observing the meeting. Apologies had been received from Mr. P. Tame, Ms. A. Pyper, Mr. C. Faircliffe, and Mr. B. Sutton.

4. Minutes of the meeting held on 6 October 2015.

Members were advised that arising from minute 21, the Midlands Road Users Group had ceased to exist, but Highways England would agree to reinstate the Group if enough

interest was expressed. Members were encouraged to contact any other groups they are members of, such as the Ramblers and British Horse Society, to express an interest.

RESOLVED:

The minutes of the meeting held on 6 October 2015 were taken as read, confirmed and signed.

5. To advise of any items which the Chairperson has agreed to take as urgent.

The Chairman took one item as urgent which was discussed elsewhere on the agenda (minute 18 refers).

6. Declarations of interest in respect of items on the agenda.

Members were invited to declare any interests in respect of the items on the agenda.

No declarations were made.

7. Presentation on the maintenance of grass verges.

The Forum received a presentation on the maintenance of grass verges. A copy of the presentation is filed with these minutes.

The Forum was advised that urban grass cuts were undertaken on a safety basis only and were not done for aesthetic purposes. Where grass was cut for aesthetic purposes this would usually be undertaken by the parish council.

Over the previous few years the number of urban grass cuts had reduced down to five per annum. However 2015 was the first year which grass cutting had been brought back in-house and a number of issues had been experienced in relation to vehicle maintenance, and ideal weather conditions causing grass to grow much longer than usual. Furthermore as a result of the issues faced during the year, the financial savings envisaged from decreasing the number of cuts had not been met due to the increased cost in equipment maintenance and repair.

As a result of the issues and a significant increase in enquiries from the public, it had been agreed by the Cabinet to increase the number of urban grass cuts from five to six per annum. The Environment and Transport Department would also adopt a more flexible approach to grass cutting by increasing the number of cuts during the peak growth season, and responding appropriately to public enquiries.

Arising from discussion the following points were raised:-

- (i). Rural verges were cut in 2 x 1 metre splays, plus any additional cuts needed to improve safety and visibility of the highways. Members of the Forum expressed concern that this was not enough for walkers and horseriders to use the verge as a highway when a path was unavailable;
- (ii). The highest number of complaints regarding grass cutting had been from North West Leicestershire due to ongoing discussions regarding the possible handover of grass cutting responsibilities to the district, which already exists with Blaby

District Council. By the time negotiations had finished the Council was significantly behind on grass cutting in the area;

- (iii). There were a number of variables to consider in grass cutting operations such as the location of depots containing the necessary equipment, potentially adverse conditions such as weather, and any areas where visibility and subsequent safety was a particular concern;
- (iv). Arising from queries from members, officers advised that despite the mild winter it was not possible to transfer resources saved from less gritting to grass cutting and highways maintenance operations. This was due to the need to save resources for any future winters where the weather could be much colder and therefore take up more resource.

RESOLVED:

That the contents of the presentation on grass cutting be noted.

#### 8. Confirmation of Sub-Groups.

The Forum was asked to consider what sub-groups they would like to continue operating to the period ending January 2017. Members requested that the current sub-groups in existence continue to work, and that a meeting on public health be set up with the potential of setting up a sub-group for health related activities.

RESOLVED:

That the following subgroups for 2016 be agreed to continue:

- Network Opportunities Committee
- Verges Committee
- Planning and Travel Committee

#### 9. Annual Report 2015.

The Forum considered the draft Annual Report 2015. A copy of the report, marked 'Agenda Item 9, is filed with these minutes.

Subject to an amendment to dates in the Network Opportunities section, members were content to approve and circulate the annual report. Suggestions were made regarding to the drafting process in the following year, and indicated that the report needed to be more attractive and engaging for members of the public.

RESOLVED:

That the Annual Report 2015 be approved.

#### 10. Reports from committees and working groups.

The Forum received updates from the committees and working groups. A copy of the updates, marked 'Agenda Item 10', is filed with these minutes.

Arising from discussion the following points were raised:-

- (i). Changes to First Bus service provision would be implemented in April. It was anticipated that Glenfield would experience significant change in bus service provision;
- (ii). Members were advised that the authority had no plans to dedicate any rights of way other than those already existing on Hall Farm. The Forum requested that officers consider committing to legally enforcing a route should the land ever be sold off;
- (iii). It was requested that officers look into the feasibility of a 20 mph speed limit implementation on Hospital Lane to allow for safe crossing to Hall Farm;
- (iv). The Forum received an update regarding County Council policy on items published by the LLAF, a copy of which is filed with these minutes;
- (v). There would potentially be future training provided by the BHS available for Forum members subject to an appropriate venue being made available.

RESOLVED:

That the updates from committees and working groups be noted.

11. Reports from representatives on outside bodies.

The Forum received updates from members sitting on outside bodies relevant to the Local Access Forum. A copy of the update, marked 'Agenda Item 11', is filed with these minutes.

Arising from discussion the following points were raised:-

- (i). The minutes of the meeting of the Heart of the Forest Access and Connectivity Forum were circulated amongst those present, a copy of which have been filed with these minutes;
- (ii). At the latest Parks, Open Spaces and Countryside Group there had been some discussion regarding the use of allotments. Whilst this fell out of the remit of the Forum, it was nonetheless promoted where possible as a means of encouraging people to go outside, and some allotments would include right of way access;
- (iii). The next EMLAF meeting was to be held in March. The Forum was asked for their views on Huddle which could be taken to the meeting. It was requested that the Chairman find out how many licenses were available for Forum members, and if members not on Huddle could have 'read only' access;
- (iv). The Forum was informed that there were some spaces on outside bodies for Forum members. It was agreed that John Howells become the Forum representative on the Heart of the Forest Access and Connectivity Forum, and that Mr John Law represent the Forum on the Canals and Waterways Group.

RESOLVED:

That the updates from representatives on outside bodies be noted.

12. Network Rail - Electrification of Midland Mainline (Edwin McWilliam)

The Forum received an update on the electrification of the Midland Mainline as proposed by Network Rail. A copy of the report, marked 'Agenda Item 12', is filed with these minutes.

The electrification of the line may cause some changes to access and rights of way due to the need for some bridges to be elevated in order for the electrification to take place. The Forum was also advised that a number of rights of way crossings had already been subject to replacement bridges.

Network Rail, who had closed off a footpath crossing in Market Harborough, have now informed the Authority that the company intend to press ahead with a bridge replacement.

Members queried whether or not the Forum would be engaged regarding HS2. Officers advised that due to the lack of information on HS2 so far it was not possible to make any representation.

RESOLVED:

That the contents of the report be noted.

13. Proposal for Future Permissive Access in Stewardship Schemes (John Law)

The Forum considered a report outlining the proposal to request that the government fund future permissive access. A copy of the report, marked 'Agenda Item 13', is filed with these minutes.

The Forum was asked to fill in the consultation questionnaire attached to the report, which the Chairman agreed to fill in on the Forum's behalf.

RESOLVED:

a) That the contents of the report be noted;

b) That the Chairman fill in the consultation questionnaire on the Forum's behalf.

14. Funding Countryside Access (John Law)

The Forum received a report outlining potential options for funding projects relating to rights of way across the County. A copy of the report, marked 'Agenda Item 14', is filed with these minutes.

The report explored the possibility of setting up a Community Interest Organisation which would allow the LLAF to apply for funding bodies. The Forum was advised that the Norfolk Local Access Forum was in the process of setting up a Community Interest Organisation.

The Forum was advised that this would require support from the Appointing Authority to act as the 'bank account' for the organisation. Concern was expressed that this would also require significant input from LAF members.

It was suggested that the Chairman raise the issue at the next EMLAF meeting which would allow the Forum to see the progress from other local access forums who were investigating becoming a Community Interest Organisation.

RESOLVED:

That the item be considered at the next meeting of the Forum.

15. Cycling and Walking Investment Strategy (Edwin McWilliam)

The Forum received an update on the Government's proposed Cycling and Walking Investment Strategy. A copy of the report, marked 'Agenda Item 15', is filed with these minutes.

The document recently published by the Government indicated a timetable for developing the strategy and how the strategy could be funded. The Forum had previously responded to the proposals for a Strategy and would respond when the draft Strategy was produced.

RESOLVED:

That the contents of the report be noted.

16. Orders update (Edwin McWilliam).

The Forum received an update on the latest public path and modification orders. A copy of the report, marked 'Agenda Item 16', is filed with these minutes.

RESOLVED:

That the contents of the update be noted.

17. Correspondence sent and received since the previous meeting.

The Forum received an update on correspondence sent and received since the previous meeting. A copy of the various correspondence, marked 'Agenda Item 17', are filed with these minutes.

The Chairman would be attending the LAF Conference in Bristol on the 23 February on behalf of the Forum.

The Forum considered the future administration of the Google Group for correspondence following the departure of Herbert Eppel. Michael Gamble volunteered to continue maintaining the Google Group.

RESOLVED:

That the items of correspondence be noted.

18. Any other items which the Chairperson has decided to take as urgent.

The Forum discussed the recent updates to the National Gazetteer. There were a number of changes being introduced which would include rights of way.

It was suggested that some routes be granted dual status such as shared routes. However officers advised that the Gazetteer is subject to specific standards and guidance.

19. Date of next meeting.

It was noted that the next meeting would be held on Wednesday 27 April at 5.30pm.

5.30 - 8.05 pm  
28 January 2016

CHAIRMAN

This page is intentionally left blank



# LEICESTERSHIRE LOCAL ACCESS FORUM MEETING

9

28<sup>th</sup> January 2016

Presentation By Matthew Reedman

Team Manager

Highway Services

Minute Item 7

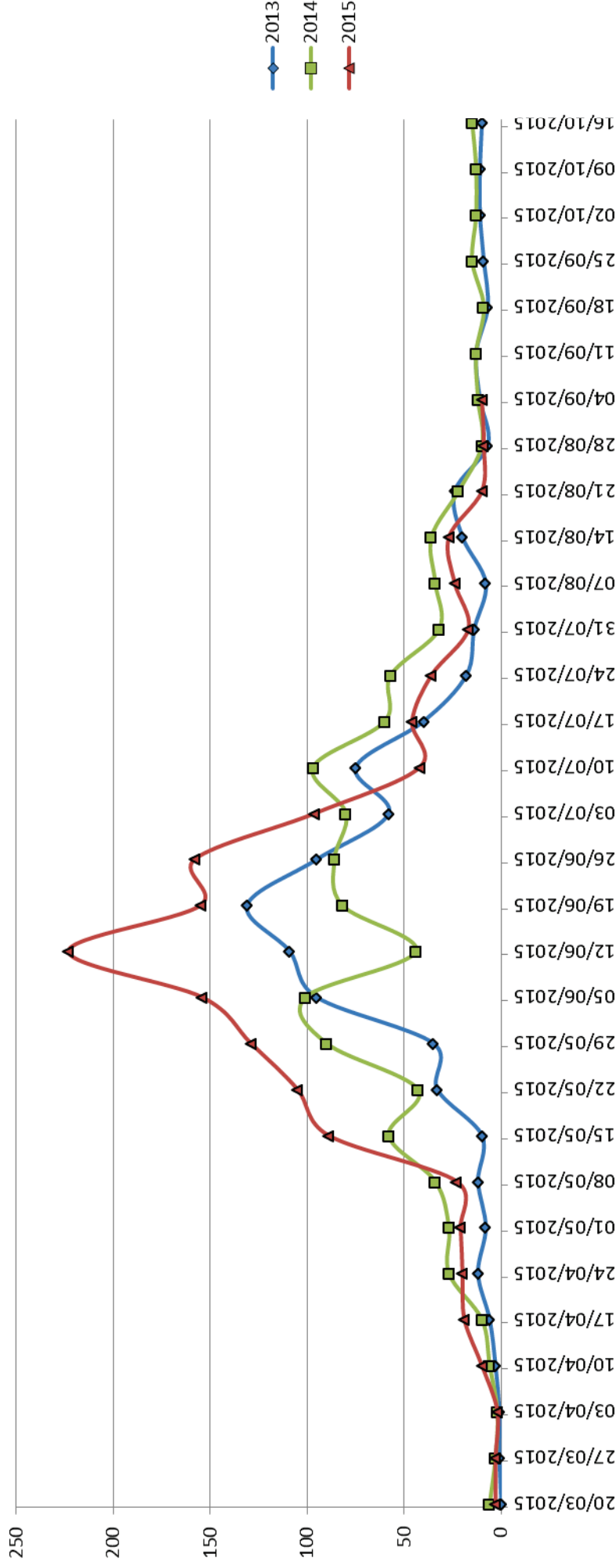
- Highway authority responsible for maintaining highway safety – cuts grass for safety reasons, not amenity or aesthetic reasons.
- Highway Maintenance Policy unchanged but application of policy changed to:
  - Urban verges up to 9 cuts per annum
    - 2013 – 7 cuts (4 week cycle – 8 gangs)
    - 2014 – 6 cuts (4 week cycle – 8 gangs)
    - 2015 – 5 cuts (6 week cycle – 5 gangs)
  - Rural verges 2x1m swaths plus visibility splays
  - Ad hoc additional cuts may be provided, if appropriate i.e. for safety (generally relates to rural)

# 2015 grass cutting

- No change to rural grass cutting
- Reduction to 5 urban cuts potentially saving of £145,000, contributing to the total £400,000 annual saving from ‘Environmental Maintenance
- Cut on a standard 6 week cycle, irrespective of growth (grass growth tends to peak in June/July)
- In house service in North West, Charnwood, Melton, Harborough and Hinckley and Bosworth.
- BDC cut Blaby and Oadby and Wigston.
- Local agreements with Approximately 30 parishes.

# Issues - enquiries peak

2013/2014/2015 Grass Cutting Enquiries Comparison (Week by Week)



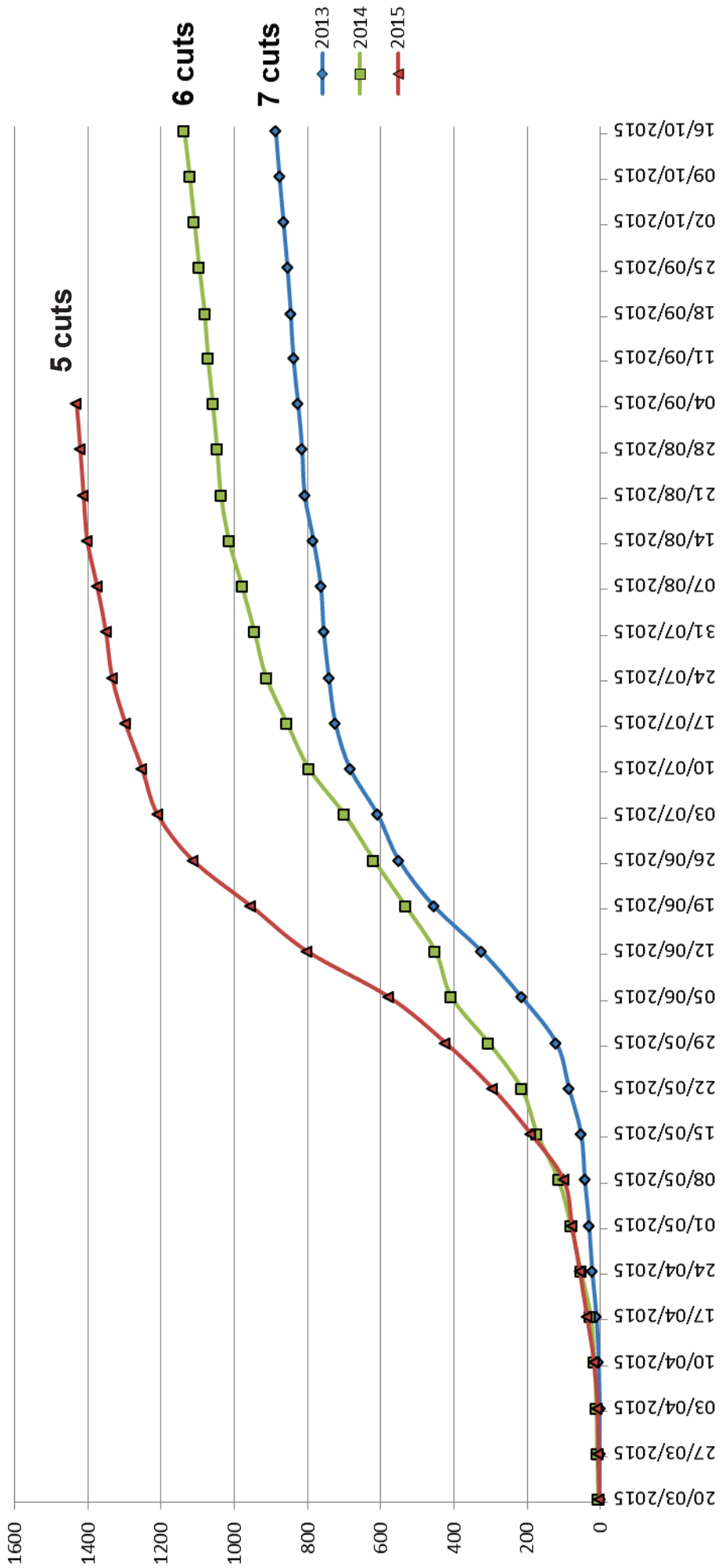
There was a significant increase in grass cutting enquiries in the period between mid May and the end of June.

Following interventions enquiries since mid July have reduced significantly to levels at or below previous years.

# Issues - enquiries by year / no. of cuts

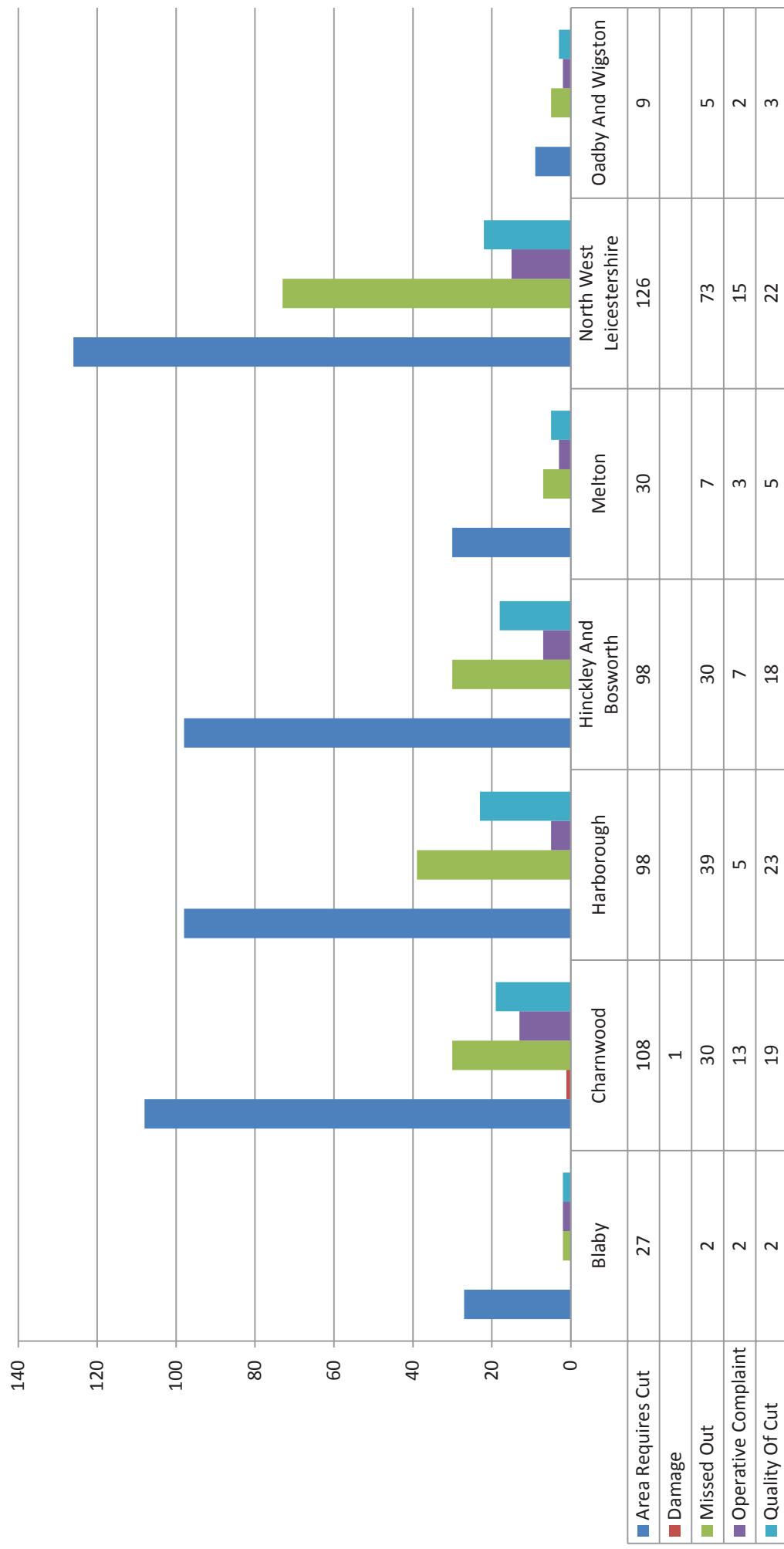


2013/2014/2015 Grass Cutting Enquiries Comparison (Cumulative)



The number of enquiries appears to be influenced by the number of standard cuts.

## Service requests by district and reason



# Issues – service requests by area

Service Requests to 4 September 2015	Population (2011 census)	m <sup>2</sup> grass cut (LCC ONLY)	Service Requests to 04/09/15	Service Requests per 100k population	Service Requests per 100k m <sup>2</sup> grass cut	Notes
<i>Blaby</i>	93,915	<i>See notes</i>	33	35.14	4.59	100% Blaby DC
Charnwood	166,100	651,568	171	102.95	26.24	m <sup>2</sup> = 75% of total
Harborough	85,382	554,558	165	193.25	29.75	m <sup>2</sup> = 81% of total
Hinckley & Bosworth	105,078	523,917	153	145.61	29.20	m <sup>2</sup> = 86% of total
Melton	50,376	480,130	45	89.33	9.37	m <sup>2</sup> = 91% of total
North West Leics	93,468	520,574	236	252.49	45.33	m <sup>2</sup> = 88% of total
<i>Oadby &amp; Wigston</i>	56,170	<i>See notes</i>	19	33.83	8.64	100% Blaby DC
<b>County (Excl BDC &amp; O&amp;W)</b>	<b>500,404</b>	<b>2,730,747</b>	<b>770</b>	<b>153.88</b>	<b>28.20</b>	

Parish

*Blaby (inc O&W)*

74,903\*

150,085

543,060

938,335

18

52

24.03

34.65

3.31

5.54

## Notes

Blaby grass cut = 718,335m<sup>2</sup>

Oadby & Wigston grass cut = 220,000m<sup>2</sup>

Service requests relating to parish cut grass have been removed (total 18)

Figures relate to urban grass only

\* ONS data - Value derived by aggregating data supplied using the Neighbourhood Statistics Geography Hierarchy

- 6 week cycle takes no account of growing season and is inflexible.
- Longer grass slows productivity and increases cost
- Lower productivity not built into schedules or budgets
- Changes to cutting areas - operatives working in unfamiliar areas reduces productivity
- Cut 2 particularly difficult – cuts behind schedule particularly NWL
- Equipment damage / breakdowns attributed to cutting longer grass
- Travelling time reduces grass cutting productivity
- Weather, contributing to significant growth
- Reduction in cuts = diminishing returns



A revised approach is recommended for 2016

- Increase the number of standard urban cuts from 5 to 6
- Introduce a variable cutting frequency, to deal with the early season peaks in grass growth (6,4,4,4,6,6)
- £85k cost to introduce over and above 2015 budget but lower risk.
- Funded by reducing revenue contribution to capital and rebalancing structural, reactive and environmental maintenance.
- Reduction in structural maintenance of £85K but carriageway condition improving – aim is to keep it constant.
- Environmental Maintenance budget needs to be considered in a similar manner to Winter Maintenance and will be weather dependent.

# Recommendations (cont)

- Introducing a more proactive approach by introducing a live ‘dashboard’ to monitor enquiries and service delivery with improved management information.
- Considering distributing mowers and gangs to improve productive time.
- Considering shift patterns and or 7 day working to minimise cost
- Improve response to safety concerns (visibility splays) by directing straight to control room for action
- Investigating technology fix's to minimise missed cuts
- Considering SME's for additional summer resource
- Additional Parish Councils requesting to take on service – but will incur £10k extra cost – do we allow?
- Not possible for LCC service to offer a flexible cut frequency.



From County Councillor Mrs. R. Camamile

To:

Mr. J. Law  
Leicestershire Local Access Forum

23<sup>rd</sup> October 2015

Dear John

I have spoken to County Council officers about your email regarding LCC policy around route literature and have been advised as follows.

If the Local Access Forum or any other group wish to develop any initiatives either on the ground or by way of improved publicity and promotion then officers would welcome an approach. Officers are happy to work with various partners including voluntary organisations to improve the existing facilities for disabled people but the resources available are limited. Any ideas will need to be properly considered and developed to a reasonable standard by the organisation bearing in mind practicalities, resources and likely outcomes.

Furthermore the Council has undertaken various surfacing projects on country parks over the recent years (including the resurfacing of the main track around Beacon Hill CP and the lower car park and the new surfaced route at Market Bosworth CP and many miles of routes at Watermead), and where resources allow will develop facilities for the disabled. The downloadable leaflets on the County Council website also include information relating to route surfaces and distances.

Having spoken to officers in the communications team it is not Leicestershire County Council's policy not to communicate information regarding disabled facilities and accessibility of the country parks, or to stop others communicating this information on their behalf. We do however look to publish the information digitally first, and have been told that information regarding trails and suitability for wheelchair users can be found on the website and is available on downloadable PDFS ([www.leicscountryparks.org.uk](http://www.leicscountryparks.org.uk)).

The Council also produces a single leaflet designed to promote all the parks and signpost people to further information on the website.

Members Group Room  
Leicestershire County Council, County Hall, Glenfield, Leicestershire LE3 8RA  
Telephone: 0116 232 3232

[www.leics.gov.uk](http://www.leics.gov.uk)

I believe you have previously flagged the ACE Accessible Countryside for Everyone website. This site also has a Leicestershire page with a number of local links to visitor sites, including County Council publications.

<http://www.accessiblecountryside.org.uk/leicestershire>

As stated earlier, officers would be happy to work with organisations such as the Local Access Forum to discuss new initiatives on the ground or in terms of publicity.

I hope you find that this responds to your enquiry regarding County Council policy. If you have any further queries, please do not hesitate to get in touch with myself, or with Edwin and Ben.

Yours sincerely

A handwritten signature in black ink, appearing to read 'Ruth Camamile', written in a cursive style.

Mrs. R. Camamile  
County Councillor

**HEART OF FOREST FORUM  
ACCESS AND CONNECTIVITY WORKING GROUP  
ACTIONS OF MEETING OF 14<sup>th</sup> January 2016**

Item	DESCRIPTION	For Action by
1	<p><b>Absence apologies from:</b> Bryan Weston; Mike Ballantyne; Alan Blackburn; James Lowe; Shawn Brotherhood; Terry Kirby; Geoff Pursglove; Richard Groves</p> <p><b>In attendance :</b> Lynne Pass – LRBA / BHS; Graham Morrison – HOFF Trail Network; Bethan Scragg – NFC; Goff Lewis – NWLDC; Roger Poole – Local Resident; Graham Knight – Moira Replan &amp; HOFF; Cllr Pat Thomas – Ashby Woulds Town Council; Dot Morson – S. Derbyshire Ramblers; Gail Archer – Swadlincote TIC; Vicky Allen – LLAF; Sam Lattaway – NFC; Steve Palmer – Local Resident; Alan Dowell – Forestry Commission; Mary Holland – LRBA / BHS</p>	
2	<p><b>Previous Meeting Actions:</b></p> <p><u>Willesley Lake</u> – Sam Ireson reported to the group that she has written to the landowners regarding reinstating the path around the lake. To date no response had been received. If the landowners do not respond or agree to reinstating the path the only other option will be for someone to apply to the Council for a Modification Order. Sam Ireson to report any progress to the next meeting.</p> <p><u>Obstruction of Public Footpath P107</u> – Sam Ireson reported that Legal Action is progressing. Group will be updated at the next meeting.</p> <p><u>Minorca Restoration</u> – Discussions with the Planners and UK Coal are ongoing regarding the restoration of the site. The proposed N-W bridleway and E-W bridleway through the site are under discussion due to safety issues identified where they will exit onto Bosworth Road and Gallows Lane. Group to be updated at next meeting.</p>	<p style="text-align: center;">SI</p> <p style="text-align: center;">SI</p> <p style="text-align: center;">SI /RP</p>
3	<p><b>Live Projects Update</b></p> <p><b><u>Project Priorities</u></b></p> <p><b>A. Hicks Lodge to Moira Furnace –</b></p> <p><u>Section A Hicks Lodge to Newfields Road</u> – Alan Dowell reported that works have started. The sub base is complete and the whole route should be completed by the end of January. Once the route is completed it will be dedicated as a Public Bridleway. Sam Ireson &amp; Alan Dowell to discuss the dedication once construction complete.</p>	<p style="text-align: center;">AD/SI</p>

<p><u>Section B Measham Road Housing Development</u> – Work on the development has begun. Cllr Pat Thomas reported that the site had become inundated with water when the developers broke through a culvert. There are also ongoing issues with the water being pumped off site. The Environment Agency is involved. The development is progressing in the northern half of the site. Any progress with the development to be reported to the next meeting</p>	ALL
<p><u>Section C Measham Road to Moira Furnace</u> – Discussions are ongoing regarding additional funding for the scheme, in addition to the NWL £40k. Landownership of the route needs to be confirmed by NWLDC and then landowners written to requesting their agreement to the surfacing of the route. Sam Ireson to update the group at the next meeting.</p>	SI
<p>Cllr Pat Thomas reported that the owner of the property adjacent to the route on Measham Road may be submitting a Planning Application for housing on the site. LCC and NWL to look out for the Planning Application and consider the proposed surfacing of the path when submitting comments.</p>	SI / NFC
<p><b>B. Hicks Lodge to Ashby Link -</b></p>	
<p>The Planning permission for the housing development, which included a link between Willesley Lane and Hicks Lodge went to appeal but was dismissed before Christmas. Sam Ireson to write to the landowners again to see if they are willing to accommodate the route anyway. Sam Ireson to report any progress to the next meeting.</p>	SI
<p>The County Council is in receipt of a Modification Order to add a footpath between Willesley lane and Hicks Lodge as well as a spur footpath into the woodland. Now that the planning process has been completed the application will be processed.</p>	
<p><b>C. Willesley to Ivanhoe Trail Link –</b></p>	
<p>Graham Morrison reported that the landownership of Pastures Lane remains unknown. The land is not registered with the Land Registry, LCC Highways department have no records that it ever existed as a Public Highway and Roger has made enquires with potential landowners. Roger Poole suggested contacting the Coal Authority. Graham Morrison to update the group at the next meeting.</p>	GM
<p>The Woodland Trust have also confirmed that they are still supportive of the development of the route although they are due to develop Access for All surfaced paths elsewhere through the woodland.</p>	

<p>Graham Morrison also reported that he and Bethan had attended a site meeting with Laura Shepherd from the Woodland Trust and the project team regarding the proposed Access for All routes at Willesley Wood. Graham confirmed that he was very impressed with the proposed project and recommended that the group support the scheme. Sam Ireson to send a letter of support to Helen on behalf of the group.</p>	<b>SI</b>
<p><b>D. Conkers to Rosliston Link</b></p> <p>Marion Farrell and Jenny Southwell were unable to attend and update the meeting.</p>	
<p><b>E. Village Hall, Moira to Maybury Wood Link</b></p> <p>Cllr Pat Thomas reported that the proposed route of the footpath between the Village Hall and Maybury Wood has been identified. There are however ongoing discussions regarding S106 monies and landownership. Update to be provided at next meeting.</p>	<b>BW / PT</b>
<p><b>Interpretation and Orientation Masterplan</b></p> <p>Bethan reported that discussions are ongoing regarding how to let the work and trying to get the best value for money. Bethan to update the group on progress at the meeting.</p>	<b>BS</b>
<p><b><u>Other Project Updates</u></b></p>	
<p><b>Millennium Milepost</b></p> <p>Sam Ireson reported that discussions regarding landowner agreement were ongoing. Sam Ireson to update the group at the next meeting</p>	<b>SI</b>
<p><b>Alternative Route for Ivanhoe Way</b></p> <p>No action required until new link between Hicks Lodge and Newfields Wood is completed. Once completed and route dedicated as a Public Bridleway, Sam Ireson to progress the change of route for the Ivanhoe Way.</p>	<b>SI</b>
<p><b>Maybury to New Albion Link</b></p> <p>Sam Ireson reported that the comments supplied on the New Albion Restoration Plan were passed to Veolia via the LCC Mineral Planners. In principal Veolia are happy with the suggested changes, however they are currently finalising the purchase of land off Tapton Estates, which once completed will enable them to confirm their</p>	

	<p>agreement. Veolia may be submitting a revised restoration plan in the vicinity of the lake. Currently it looks as if restoration of the site may be delayed due to the presence of Great Crested Newts.</p> <p>Sam Ireson also reported that she has had discussions with Phil Metcalfe of the NFC regarding links between New Albion and the adjoining National Forest owned land, and the National Forest Company have agreed in principle to the creation of the link(s). Sam Ireson to provide an update to the next meeting.</p> <p><b>Countryside For All</b></p> <p>Sam Lattaway reported that the project is moving forward steadily. He is currently looking into a potential funding bid. Sam Lattaway to update the group at the next meeting.</p> <p><b>Horse Riding Access south of A42 to Minorca Site</b></p> <p>Roger Poole reported that discussions were ongoing. Roger Poole and Alan Blackburn to update the group at the next meeting.</p> <p><b>Proposed Bridleway Circuit Update</b></p> <p>Roger Poole reported that he and Alan were looking at revising the route, possibly including an extension to the Moira – Measham Trail. Roger Poole to provide Sam Ireson with a plan and project outline for distribution to group members for comments. Alan Blackburn and Roger Poole to update the group at the next meeting.</p>	<p><b>SI</b></p> <p><b>SL</b></p> <p><b>RP/AB</b></p> <p><b>AB / RP / SI</b></p>
4.	<p><b>Funding and Bids:</b></p> <p><u>Black to Green</u></p> <p>Bethan requested that all volunteers who attend the group be registered as a Volunteer for the Black to Green project to enable their volunteering time to be counted as Match Funding.</p> <p>Bethan reported that a variety of events are organised over the coming months including a Bio Blitz event at Hicks Lodge on 23<sup>rd</sup> April, Conservation events, Youth engagement events and a Training and Education Learning Programme.</p> <p>Bethan also reported that there is now a Black to Green Facebook page. Project Evaluation Consultants are also in place and will be involved with the Access and Connectivity Group.</p> <p>Graham Knight asked if anyone had any everyday life photos of the</p>	<p><b>BS / ALL</b></p> <p><b>BS/GK/ALL</b></p>



	area from the past. They have a lot of industrial photos so could do with some different images, and also any stories of the area.	
<b>5.</b>	<b>Future Project Proposals for Discussion</b>  No project proposals to discuss	
<b>6.</b>	<b>HOFF Update</b>  Graham Knight reported that the HOFF are considering meeting yearly rather than quarterly. Graham to update the group at the next meeting.	<b>GK</b>
<b>7.</b>	<b>Any Other Business</b>  <u>Alan Leather</u>  Sam Ireson informed the group that Alan Leather will no longer be attending as he has now passed on the Black to Green project to Bethan. Sam read out his email thanking the group for their work. In response Sam Ireson has passed on thanks to Alan on behalf of the group.  <u>Hanging Hill</u>  A request was made for an update on the National Forest Company's proposals for Hanging Hill. Sam Lattaway reported that discussions were ongoing and it was a long process. Sam Lattaway will update the group at the next meeting.  <u>Heritage Walks in the Heart of the Forest Book</u>  Dot Morson showed the group a walking book she has produced titled "Heritage Walks in the Heart of the Forest". The price of the book is £3.50.	<b>SL</b>
	<b>Date of Next Meeting:</b> Thursday 21 <sup>st</sup> April, 2pm at NFC Offices, Moira	

This page is intentionally left blank